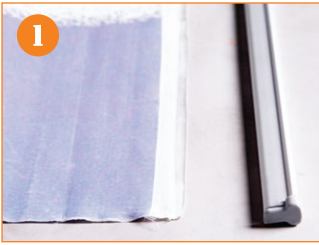


BT-Duo

Instructions for Graphic Installation



1. Arrange the graphic and the top bar so they are parallel to each other.



2. Remove the end caps on both sides.



3. Open the top bar.



4. Insert the graphic into the top bar and press to close.



5. Insert the end caps on both sides.



6. Arrange the graphic and the base leader parallel to each other.



7. Peel off the adhesive paper.



8. Attach the base of the graphic on top of the adhesive and press firmly to secure.



9. Remove the base end caps



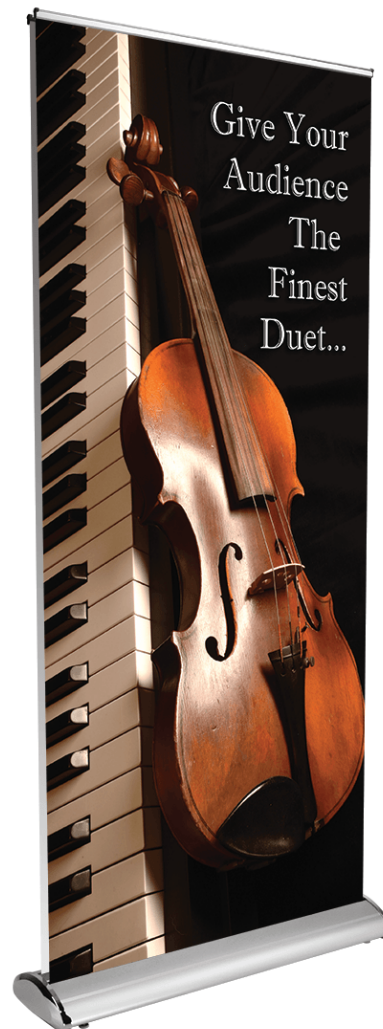
10. Hold the graphic and remove the spring key.



11. Slowly retract the graphic into the base.



12. Return the end caps.



BT-Duo

Instructions for Display Unit



1. Unda black padded bag.



2. Take out the hardware and pole from the bag.



3. Connect the 3 section pole.



4. Insert the pole into the base.



5. Attach one top bar on the top clamp profile.



6. Attach the other top bar on the top clamp profile.

