

BT-SIGIL

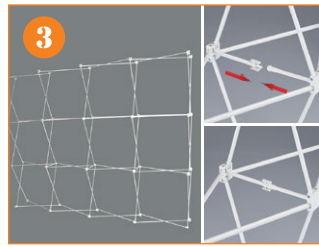
Instructions for Display Unit



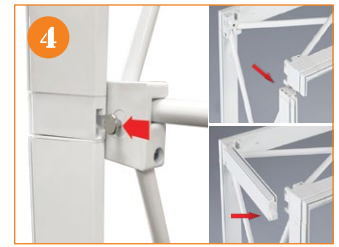
1. Sigil Canvas Bag.



2. Take out the frame from the bag.



3. Open the frame and lock in the inserts.



4. Install the channel bars around the frame.



5. Completed Sigil frame



6. Install the graphic by pressing the silicone edges into the corners of the frame.



7. Completed Sigil with Silicone Edge Graphic.



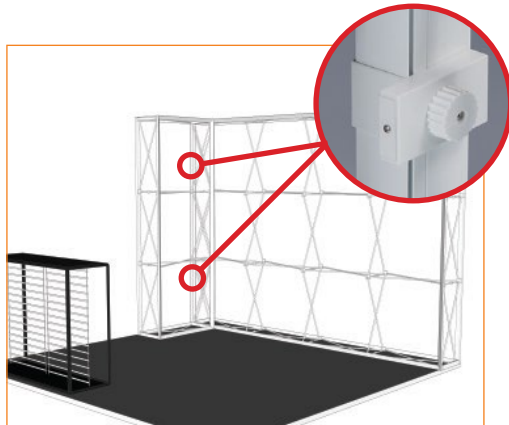
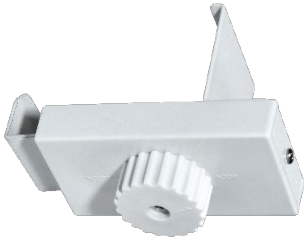
8. Option: Use the SEG foot to stabilize the frame. To install, slide it in the base of the frame.



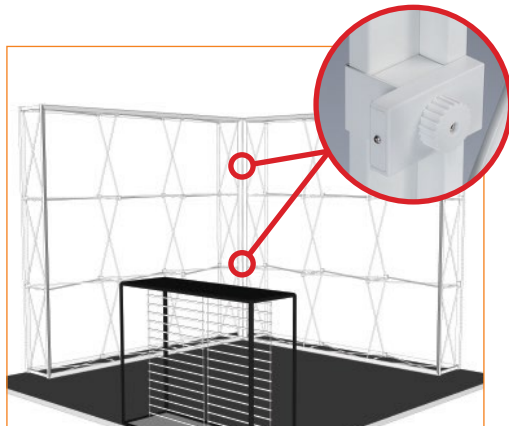
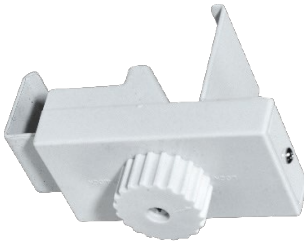
BT-SIGIL

Instructions for Bridge & Connectors

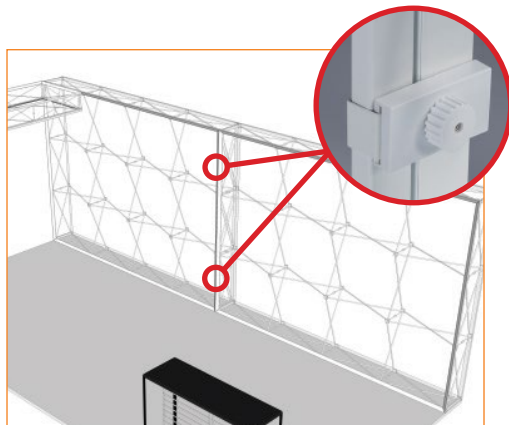
In-overlap Connector



Regular Connector



Straight Connector



Bridge Connector

