

# BT-ILLUMI

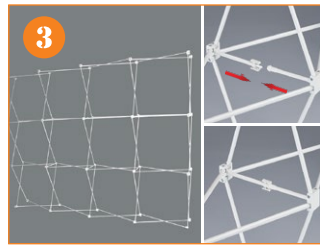
## Instructions for Display Unit



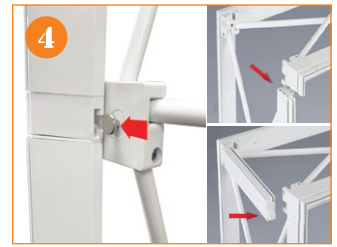
1. Illumi Multi-Compartment Canvas Bag.



2. Take out the frame from the bag.



3. Open the frame and lock in the inserts.



4. Install the channel bars around the frame.



5. Finished Illumi frame.



6. Take out the ladder lights from the bag.



7. Un-fold the ladder lights.



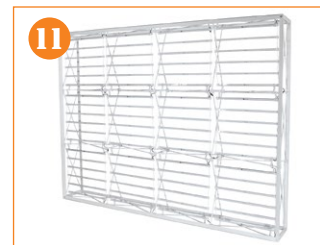
8. Put the ladder lights on the frame with the hooks



9. Connect the ladder lights one section at a time.



10. Connect the transformer.



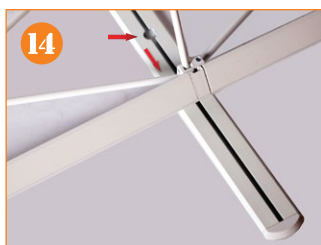
11. Completed Illumi frame with ladder lights.



12. Install the graphic by pressing the silicone edges into the corners of the frame.



13. Completed Illumi with Silicone Edge Graphic.



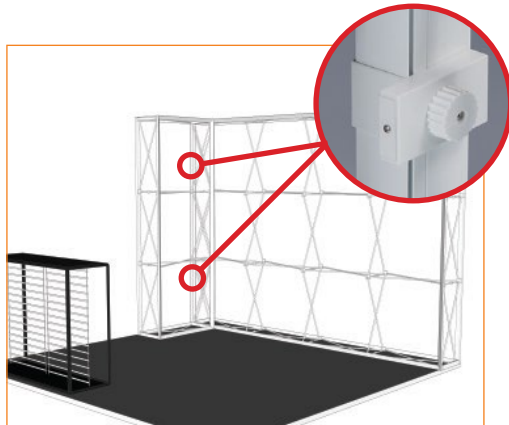
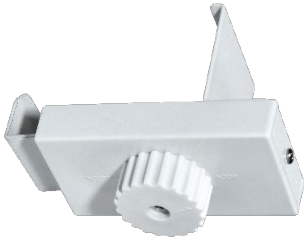
14. Option: Use the SEG foot to stabilize the frame. To install, slide it in the base of the frame.



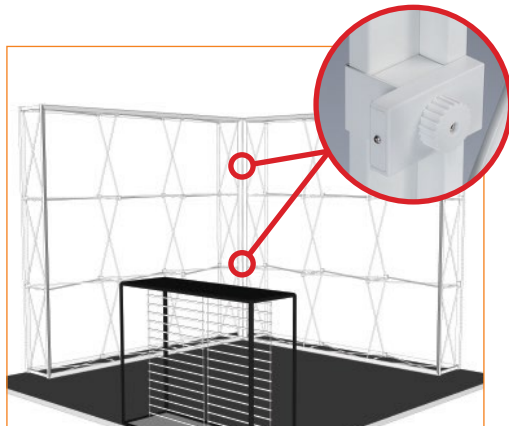
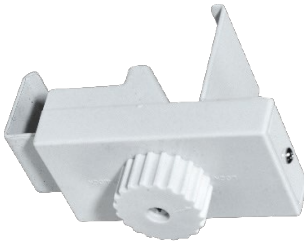
# BT-ILLUMI

## Instructions for Bridge & Connectors

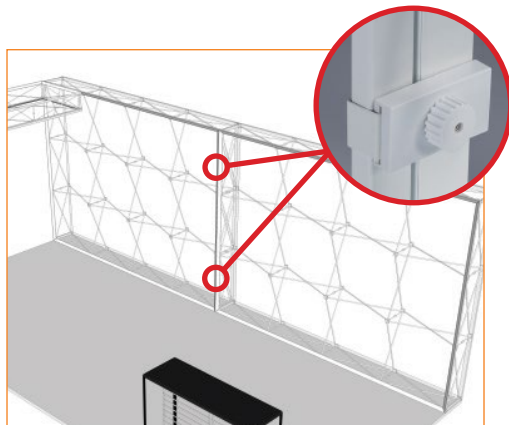
**In-overlap Connector**



**Regular Connector**



**Straight Connector**



**Bridge Connector**

