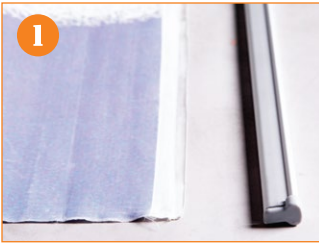


BT-04-2

Instructions for Graphic Installation



1. Arrange the graphic and the top bar so they are parallel to each other.



2. Remove the end caps on both sides.



3. Open the top bar.



4. Insert the graphic into the top bar and press to close.



5. Insert the end caps on both sides.



6. Arrange the graphic and the base leader parallel to each other.



7. Peel off the adhesive paper.



8. Attach the base of the graphic on top of the adhesive and press firmly to secure.



9. Flip the bottom of the base, remove the under screw, then remove the end caps.



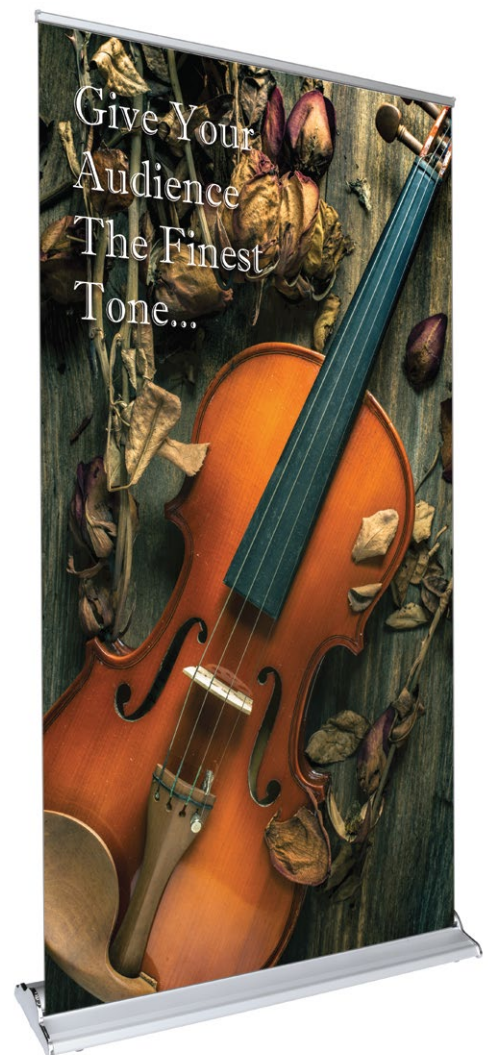
10. Hold the graphic and remove the spring key.



11. Slowly retract the graphic into the base.



12. Close the end caps with the screw.



BT-04-2

Instructions for Display Unit



1. Insegna Gray Hard Case.



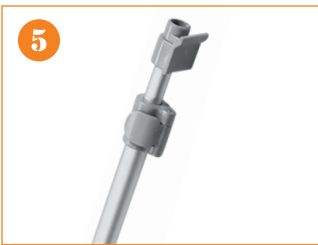
2. Open the bag and take out the base hardware and poles.



3. Connect the telescopic clip pole.



4. Insert the pole into the base.



5. Open and close the clip to adjust the height of the pole.



6. Attach the top bar on the top clamp profile.

